

# CONTENTS

## **N(A) LEVEL SCIENCE (BIOLOGY)**

*Subject Code 5106 / 5107*

Year 2014 – 2017      Paper 5 and Paper 6

*Subject Code 5156 / 5157*

Years 2008 – 2013      Paper 5 and Paper 6

### **Past Examinations Papers 5 and 6**

<b>Year 2017</b> .....	(2017)1 ~ 18
<b>Year 2016</b> .....	(2016)1 ~ 20
<b>Year 2015</b> .....	(2015)1 ~ 18
<b>Year 2014</b> .....	(2014)1 ~ 14
<b>Year 2013</b> .....	(2013)1 ~ 18
<b>Year 2012</b> .....	(2012)1 ~ 16
<b>Year 2011</b> .....	(2011)1 ~ 16
<b>Year 2010</b> .....	(2010)1 ~ 12
<b>Year 2009</b> .....	(2009)1 ~ 14
<b>Year 2008</b> .....	(2008)1 ~ 16

*Also available*

### **ANSWER BOOK (Separate booklet)**

*Subject Code 5106 / 5107*

Year 2014 – 2017

*Subject Code 5156 / 5157*

Years 2008 – 2013

*Paper 5 answers with explanations*

*Paper 6 answers with workings where applicable*

*The answers\* serve as a useful reference for self-study purposes.*

#### **Thought process**

This feature provides guidance to each question so as to assist students through their thought processes for effective learning and revision.

\* The answers to the questions compiled in this publication are given by the publisher, Singapore Asia Publishers Pte Ltd. Singapore Examinations and Assessment Board bears no responsibility for these answers. Any queries or comments on the answers should be forwarded to the publisher directly.



---

## SCIENCE (BIOLOGY)

5107/05

Paper 5 Multiple Choice

September/October 2017

Papers 5 and 6: 1 hour 15 minutes

Additional Materials: Multiple Choice Answer Sheet

---

### READ THESE INSTRUCTIONS FIRST

Write in soft pencil.

Do not use staples, paper clips, glue or correction fluid.

Write your name, Centre number and index number on the Answer Sheet in the spaces provided unless this has been done for you.

DO **NOT** WRITE IN ANY BARCODES.

There are **twenty** questions on this paper. Answer **all** questions. For each question there are four possible answers **A, B, C** and **D**.

Choose the **one** you consider correct and record your choice in **soft pencil** on the separate Answer Sheet.

**Read the instructions on the Answer Sheet very carefully.**

Answers to Paper 5 and Paper 6 must be handed in separately.

Each correct answer will score one mark. A mark will not be deducted for a wrong answer.

You are advised to spend no more than **30 minutes** on **Paper 5**.

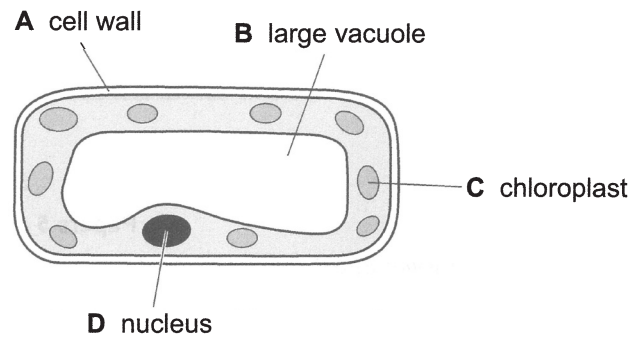
You may proceed to answer Paper 6 as soon as you have completed Paper 5.

Any rough working should be done in this booklet.

The use of an approved scientific calculator is expected, where appropriate.

1 The diagram shows a plant cell.

Which part of the cell is also found in a typical animal cell?



2 Which statement about xylem vessels is correct?

- A Their woody walls hold the vessels open for movement of water.
- B The xylem vessels are only found in leaves.
- C They are hollow tubes which allow easy movement of foods.
- D Water carrying ions passes through the vessels by osmosis.

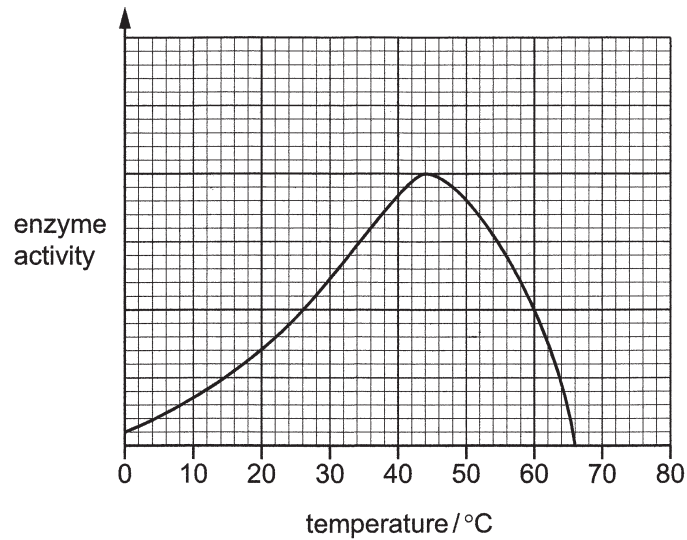
3 Which row shows the processes by which carbon dioxide and oxygen move across the alveoli walls?

	process by which carbon dioxide moves	process by which oxygen moves
A	diffusion	diffusion
B	diffusion	osmosis
C	osmosis	diffusion
D	osmosis	osmosis

4 What are the basic units of a protein molecule?

- A amino acids
- B fatty acids
- C mineral salts
- D simple sugars

- 5 The graph shows the effect of temperature on the activity of an enzyme.



The enzyme activity

- A is greatest at 66 °C.
  - B is slowest at 10 °C.
  - C is the same at 26 °C and 60 °C.
  - D stops at 44 °C.
- 6 Large molecules in food are broken down into smaller molecules in the alimentary canal.
- What is the name of this process?
- A absorption
  - B assimilation
  - C digestion
  - D ingestion
- 7 Complete the sentence. A function of the hepatic portal vein is to transport blood rich in
- A amino acids from the intestine to the liver.
  - B glucose from the liver to the intestine.
  - C oxygen from the liver to the intestine.
  - D urea from the intestine to the liver.